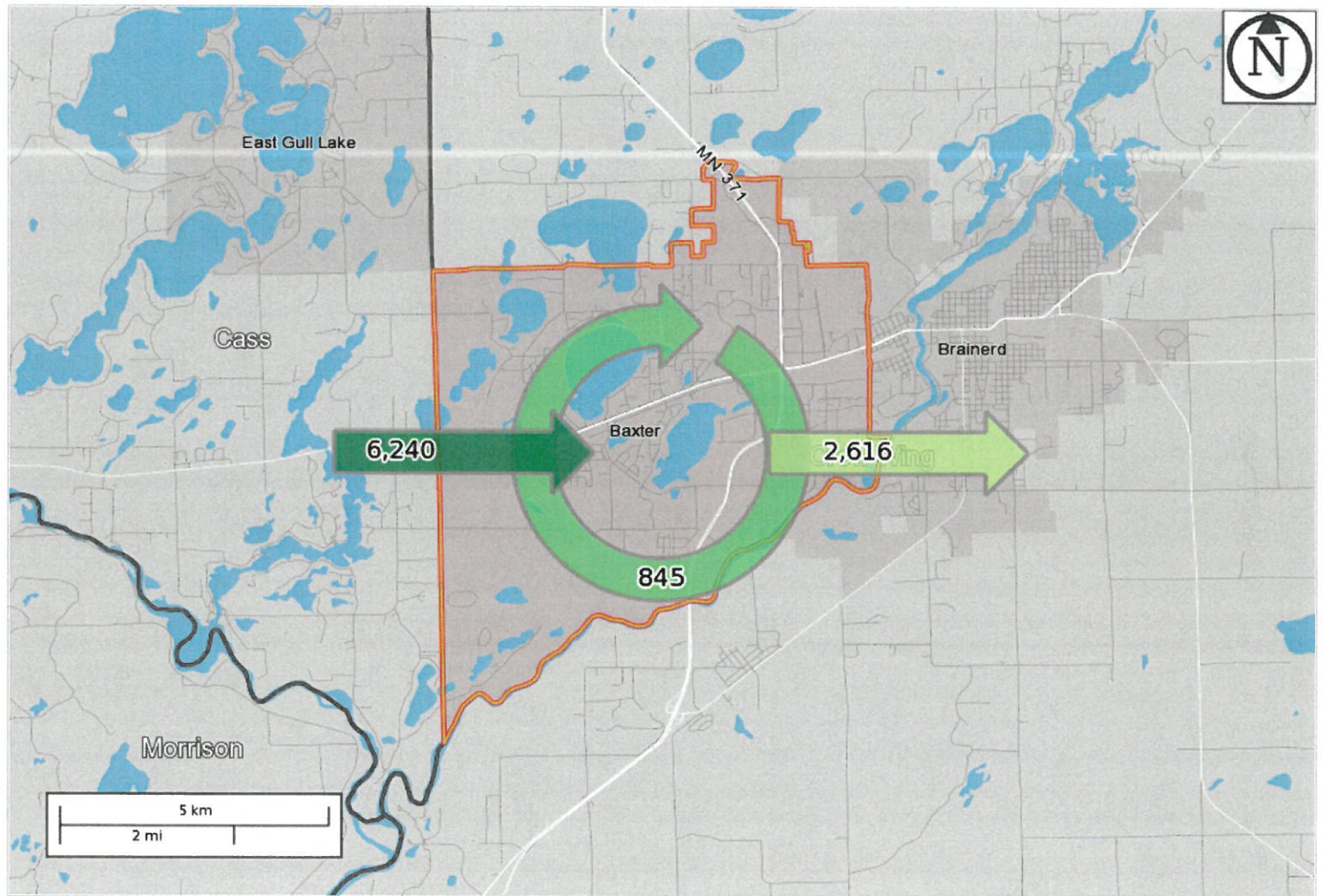


Baxter, MN Inflow/Outflow Analysis 2014 All Jobs

Created by the U.S. Census Bureau's OnTheMap <http://onthemap.ces.census.gov> on 05/18/2017

Inflow/Outflow Counts of All Jobs for Selection Area in 2014 All Workers



Map Legend

Selection Areas

Analysis Selection

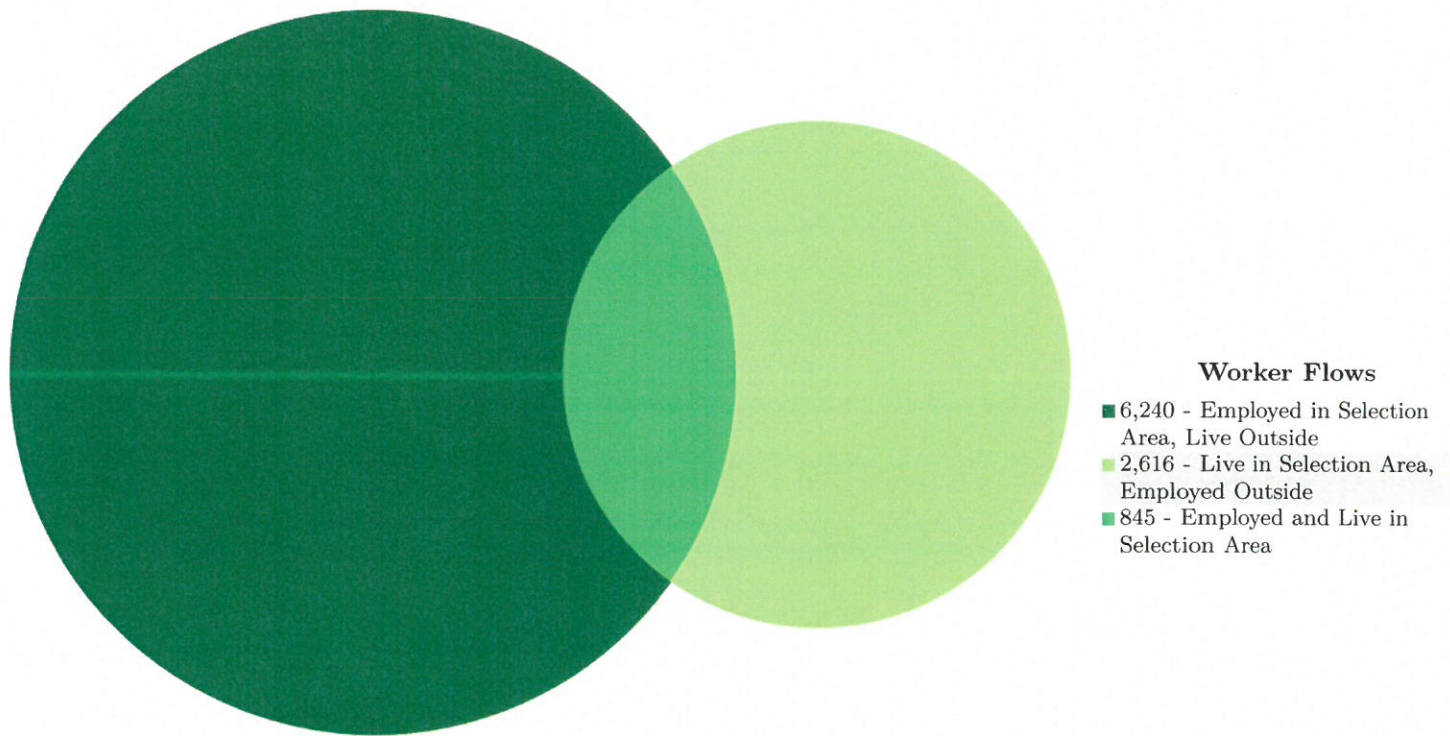
Inflow/Outflow

- Employed and Live in Selection Area
 - Employed in Selection Area, Live Outside
 - Live in Selection Area, Employed Outside
- Note: Overlay arrows do not indicate directionality of worker flow between home and employment locations.



Inflow/Outflow Counts of All Jobs for Selection Area in 2014

All Workers



Inflow/Outflow Counts of All Jobs for Selection Area in 2014

All Workers

Worker Totals and Flows	2014	
	Count	Share
Employed in the Selection Area	7,085	100.0
Employed in the Selection Area but Living Outside	6,240	88.1
Employed and Living in the Selection Area	845	11.9
Living in the Selection Area	3,461	100.0
Living in the Selection Area but Employed Outside	2,616	75.6
Living and Employed in the Selection Area	845	24.4

Additional Information

Analysis Settings

Analysis Type	Inflow/Outflow
Selection area as	N/A
Year(s)	2014
Job Type	All Jobs
Selection Area	Baxter city, MN from Places (Cities, CDPs, etc.)
Selected Census Blocks	408
Analysis Generation Date	05/18/2017 16:44 - OnTheMap 6.5
Code Revision	d811b5cc7e2dd2dc6203f94e753d94ce84f265af
LODES Data Version	20160219

Data Sources

Source: U.S. Census Bureau, OnTheMap Application and LEHD Origin-Destination Employment Statistics (Beginning of Quarter Employment, 2nd Quarter of 2002-2014).

Notes

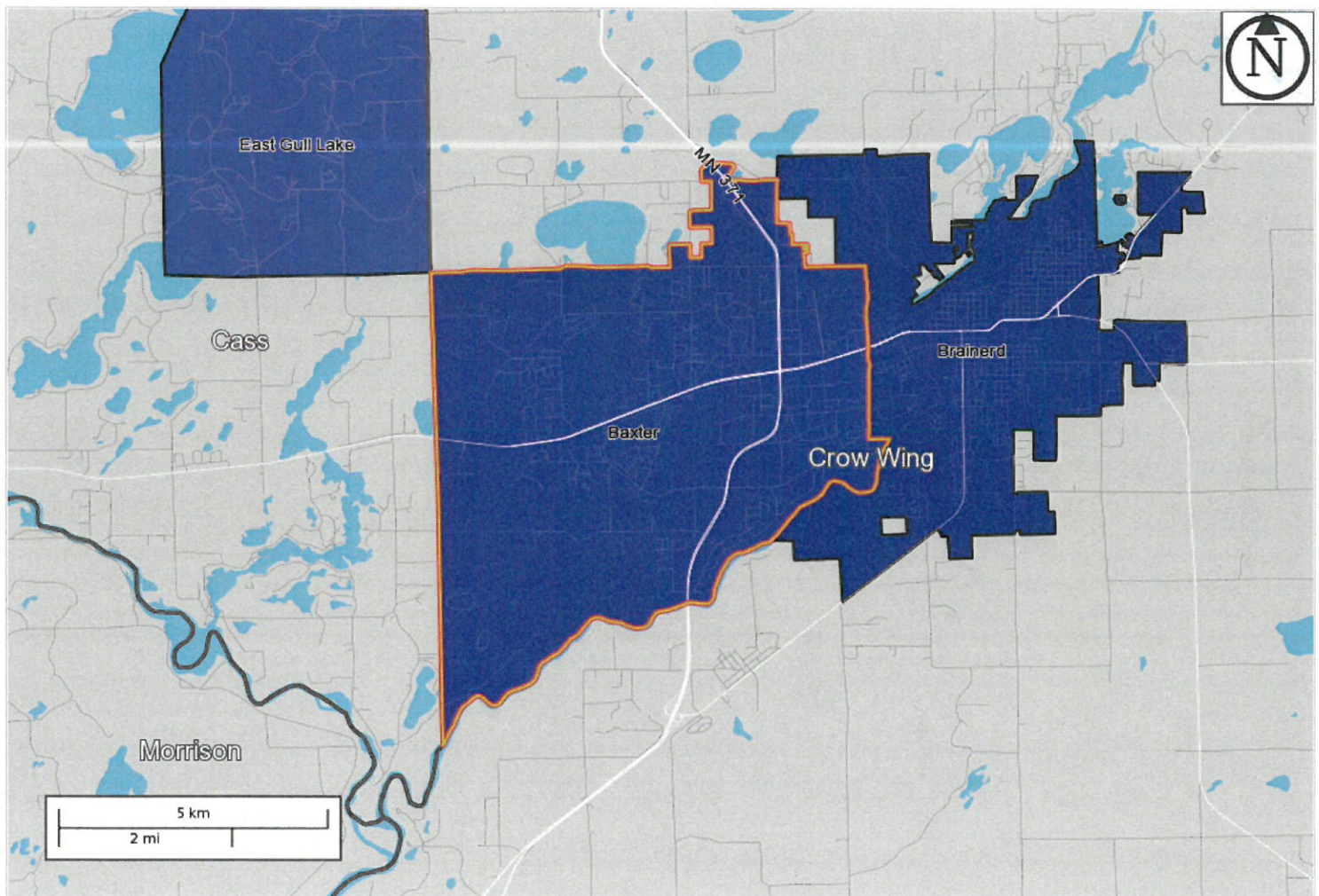
1. Race, Ethnicity, Educational Attainment, and Sex statistics are beta release results and are not available before 2009.
2. Educational Attainment is only produced for workers aged 30 and over.
3. Firm Age and Firm Size statistics are beta release results for All Private jobs and are not available before 2011.

Home Destination Report - Work Selection Area to Home Places (Cities, CDPs, etc.)

All Jobs for All Workers in 2014

Created by the U.S. Census Bureau's OnTheMap <http://onthemap.ces.census.gov> on 05/18/2017

Counts of All Jobs from Work Selection Area to Home Places (Cities, CDPs, etc.) in 2014
All Workers



Map Legend

Job Count

- 1,329
- 845
- 120
- 112
- 96
- 83
- 71
- 57
- 48
- 42

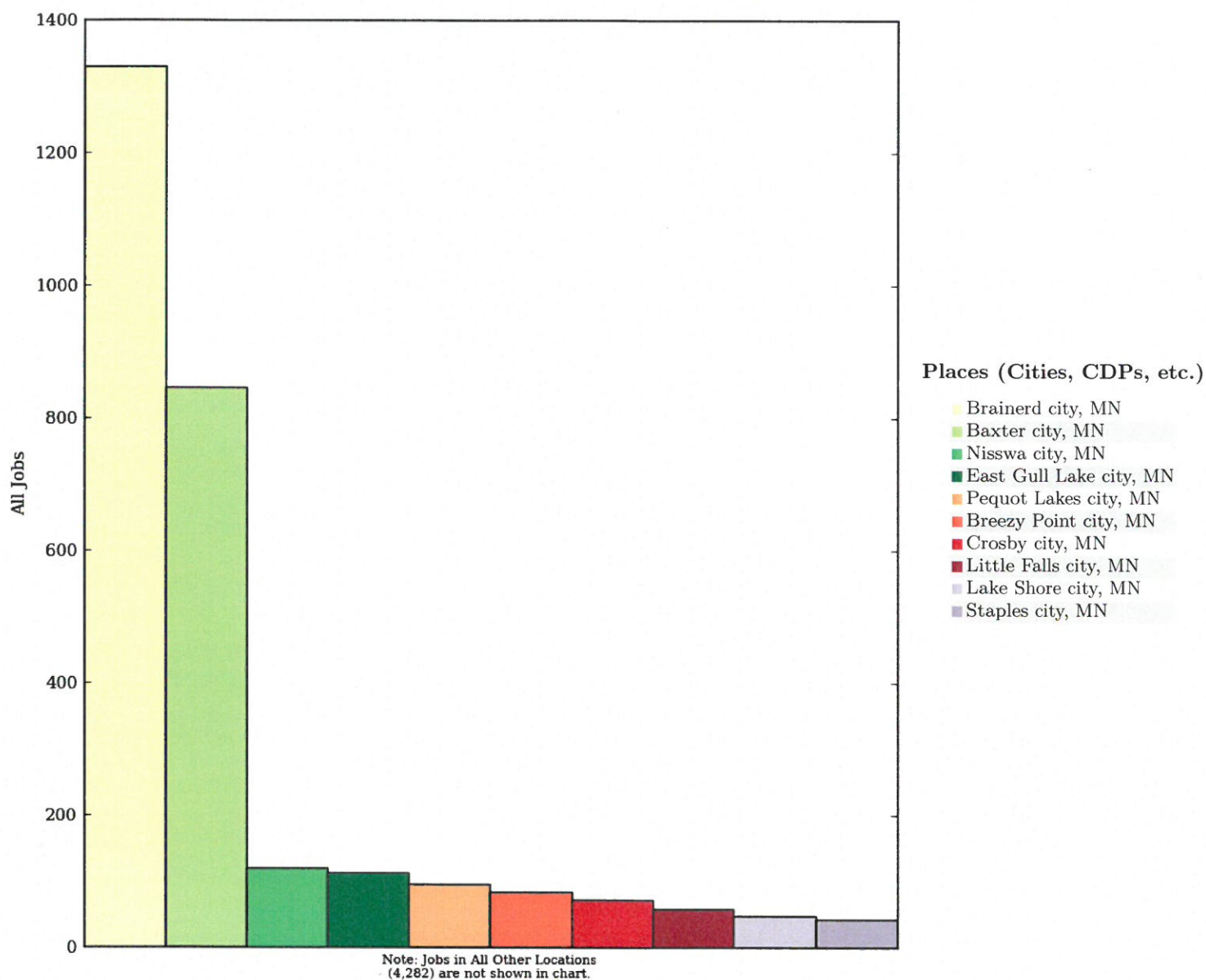
Selection Areas

- Analysis Selection



All Jobs from Work Selection Area to Home Places (Cities, CDPs, etc.) in 2014

All Workers



All Jobs from Work Selection Area to Home Places (Cities, CDPs, etc.) in 2014

All Workers

Places (Cities, CDPs, etc.) as Home Destination Area	2014	
	Count	Share
All Places (Cities, CDPs, etc.)	7,085	100.0
Brainerd city, MN	1,329	18.8
Baxter city, MN	845	11.9
Nisswa city, MN	120	1.7
East Gull Lake city, MN	112	1.6
Pequot Lakes city, MN	96	1.4
Breezy Point city, MN	83	1.2
Crosby city, MN	71	1.0
Little Falls city, MN	57	0.8

Places (Cities, CDPs, etc.) as Home Destination Area	2014	
	Count	Share
Lake Shore city, MN	48	0.7
Staples city, MN	42	0.6
All Other Locations	4,282	60.4

Additional Information

Analysis Settings

Analysis Type	Destination
Destination Type	Places (Cities, CDPs, etc.)
Selection area as	Work
Year(s)	2014
Job Type	All Jobs
Selection Area	Baxter city, MN from Places (Cities, CDPs, etc.)
Selected Census Blocks	408
Analysis Generation Date	05/18/2017 16:46 - OnTheMap 6.5
Code Revision	d811b5cc7e2dd2dc6203f94e753d94ce84f265af
LODES Data Version	20160219

Data Sources

Source: U.S. Census Bureau, OnTheMap Application and LEHD Origin-Destination Employment Statistics (Beginning of Quarter Employment, 2nd Quarter of 2002-2014).

Notes

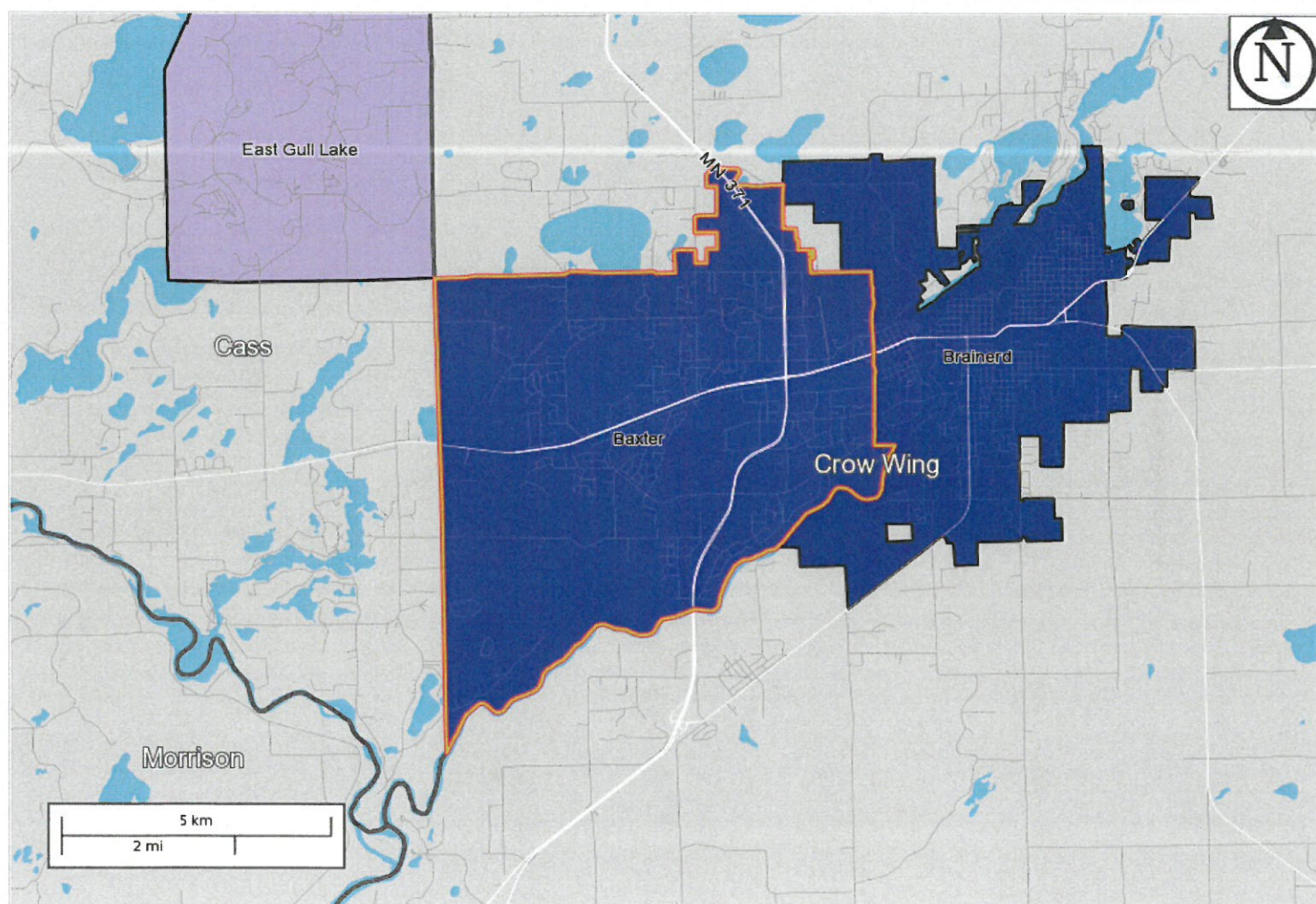
1. Race, Ethnicity, Educational Attainment, and Sex statistics are beta release results and are not available before 2009.
2. Educational Attainment is only produced for workers aged 30 and over.
3. Firm Age and Firm Size statistics are beta release results for All Private jobs and are not available before 2011.

Work Destination Report - Home Selection Area to Work Places (Cities, CDPs, etc.)

All Jobs for All Workers in 2014

Created by the U.S. Census Bureau's OnTheMap <http://onthemap.ces.census.gov> on 05/18/2017

Counts of All Jobs from Home Selection Area to Work Places (Cities, CDPs, etc.) in 2014
All Workers



Map Legend

Job Count

- 1,094
- 845
- 81
- 69
- 66
- 62
- 58
- 39
- 34
- 32

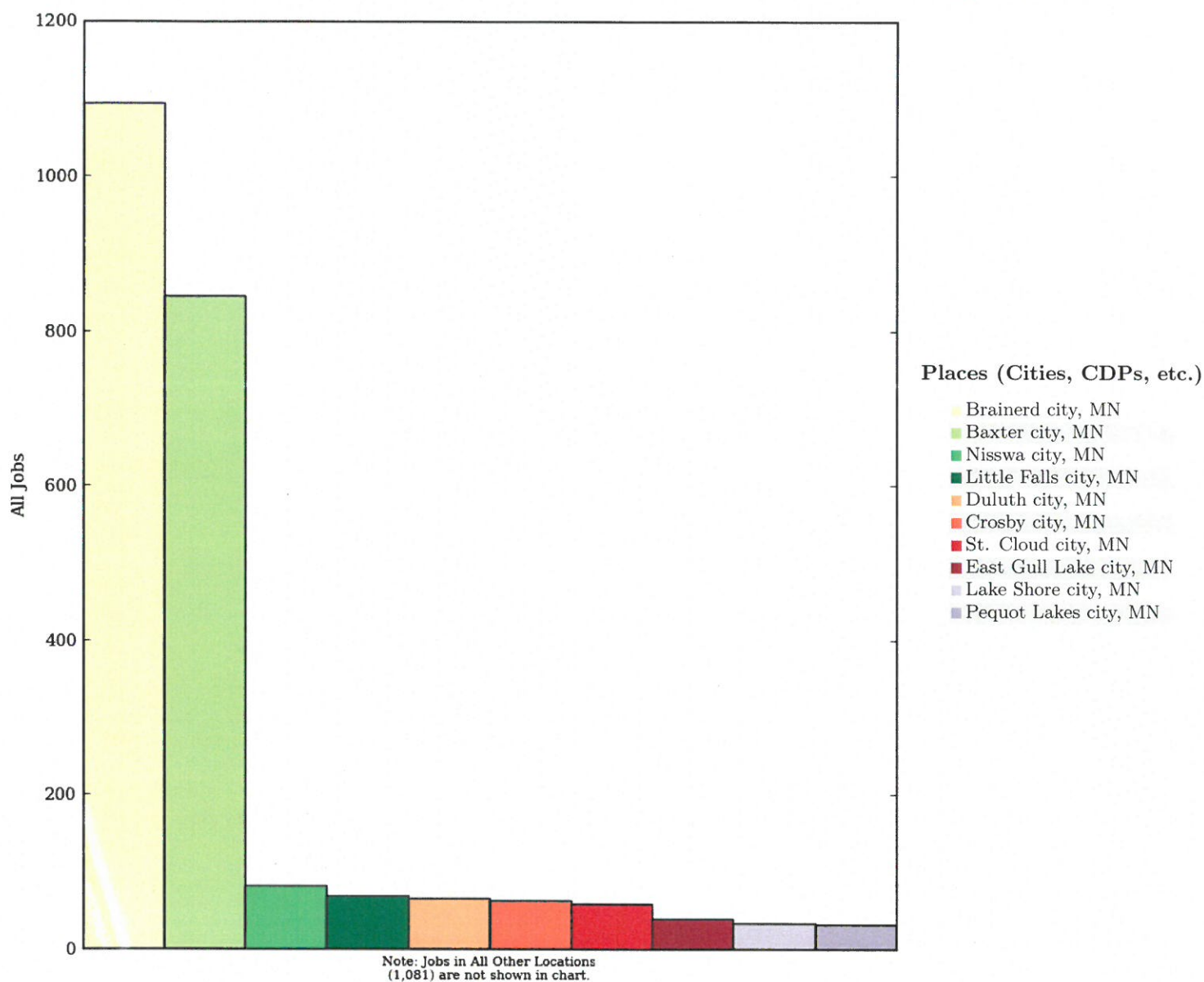
Selection Areas

- Analysis Selection



All Jobs from Home Selection Area to Work Places (Cities, CDPs, etc.) in 2014

All Workers



All Jobs from Home Selection Area to Work Places (Cities, CDPs, etc.) in 2014

All Workers

Places (Cities, CDPs, etc.) as Work Destination Area	2014	
	Count	Share
All Places (Cities, CDPs, etc.)	3,461	100.0
Brainerd city, MN	1,094	31.6
Baxter city, MN	845	24.4
Nisswa city, MN	81	2.3
Little Falls city, MN	69	2.0
Duluth city, MN	66	1.9
Crosby city, MN	62	1.8
St. Cloud city, MN	58	1.7
East Gull Lake city, MN	39	1.1

Places (Cities, CDPs, etc.) as Work Destination Area	2014	
	Count	Share
Lake Shore city, MN	34	1.0
Pequot Lakes city, MN	32	0.9
All Other Locations	1,081	31.2

Additional Information

Analysis Settings

Analysis Type	Destination
Destination Type	Places (Cities, CDPs, etc.)
Selection area as	Home
Year(s)	2014
Job Type	All Jobs
Selection Area	Baxter city, MN from Places (Cities, CDPs, etc.)
Selected Census Blocks	408
Analysis Generation Date	05/18/2017 16:45 - OnTheMap 6.5
Code Revision	d811b5cc7e2dd2dc6203f94e753d94ce84f265af
LODES Data Version	20160219

Data Sources

Source: U.S. Census Bureau, OnTheMap Application and LEHD Origin-Destination Employment Statistics (Beginning of Quarter Employment, 2nd Quarter of 2002-2014).

Notes

1. Race, Ethnicity, Educational Attainment, and Sex statistics are beta release results and are not available before 2009.
2. Educational Attainment is only produced for workers aged 30 and over.
3. Firm Age and Firm Size statistics are beta release results for All Private jobs and are not available before 2011.